

CUSTOM DESIGNED WG SEALS PRIMARY SEALS

WG Seals is Mesa ETP's premier seal system for floating roofs in above ground storage tanks (ASTs). The WG Seal is the proven and trusted seal system used by the industry's leading storage terminal owners, refineries, pipelines, and AST contractors in thousands of installations worldwide for over 35 years.

The WG Seal system now features ClipLock™, the proprietary fastener-free lock-in-place fabric attachment system that makes installation faster, easier, and safer for the installers and the environment.

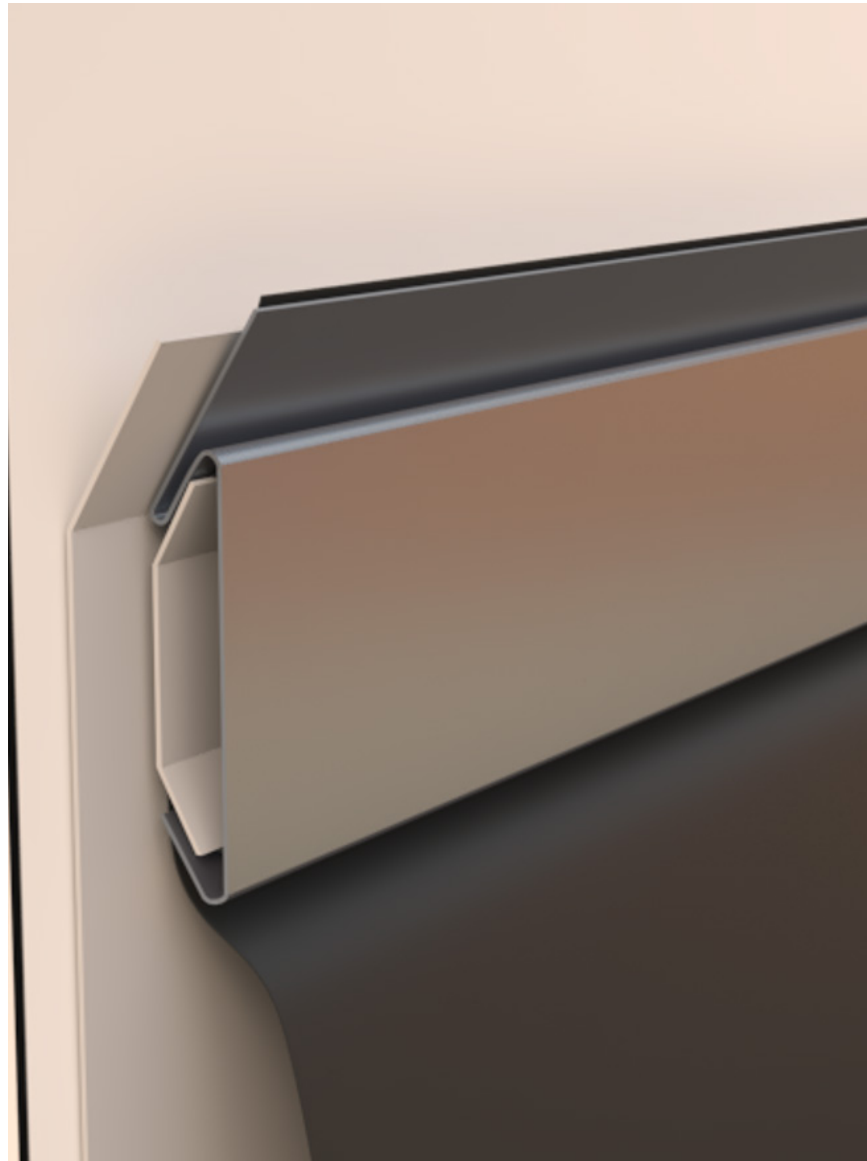
DEMONSTRATED TO INSTALL IN HALF THE TIME

In actual storage tank field tests, workers installed the WG shoe seal with ClipLock™ attachment system in about half the time of the conventional seals. This means workers spend less tank time on in-service installations. Plus, there are no small fasteners that discourage the use of required safety gloves.

SIGNIFICANTLY REDUCES EMISSIONS

ClipLock™ replaces the time-consuming bolt-through system that can compromise fabric integrity. The lock-in-place system features continuous fabric contact, a method that has been shown in laboratory tests to significantly reduce product emissions.

AMERICAN OWNED. AMERICAN BUILT.



WG SEALS FEATURING CLIPLOCK™ LOCK-IN-PLACE PROPRIETARY ATTACHMENT SYSTEM

WG SEALS

ENGINEERED PRODUCTS FOR ABOVEGROUND STORAGE TANKS
WITH CLIPLOCK™ LOCK-IN-PLACE PROPRIETARY ATTACHMENT SYSTEM

WG SEAL SYSTEM COMPONENTS

- Mechanical shoe primary seal (available in stainless steel or galvanized steel in multiple heights)
- Multiple seal fabrics to choose from depending on the tank product

KEY FEATURES & BENEFITS

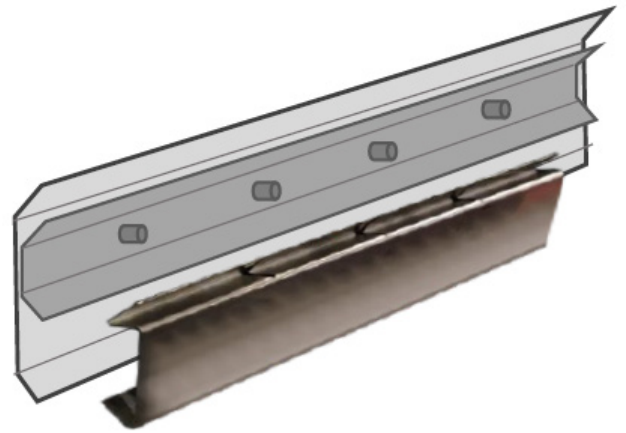
- Adaptable to existing or new floating roofs
- Compatible with most stored products including 100% aromatics
- Able to be installed while the tank remains in service (no welding or flame cutting)
- Faster installation compared to other seal systems
- Adaptable to severely out-of-round tanks

FEATURING CLIPLOCK™

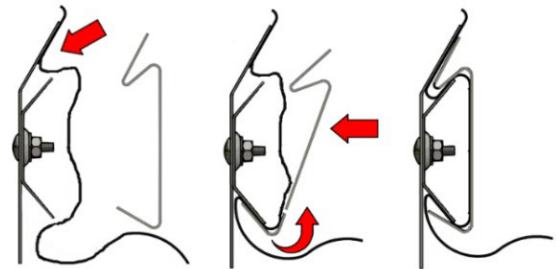
- Installs in about half the time of conventional seals
- No fasteners or tools required to hold fabric in place
- No holes in seal fabric that would compromise integrity
- Dramatically reduces product loss and emissions
- Easily detached and reattached for quick inspections

HOW CLIPLOCK™ WORKS

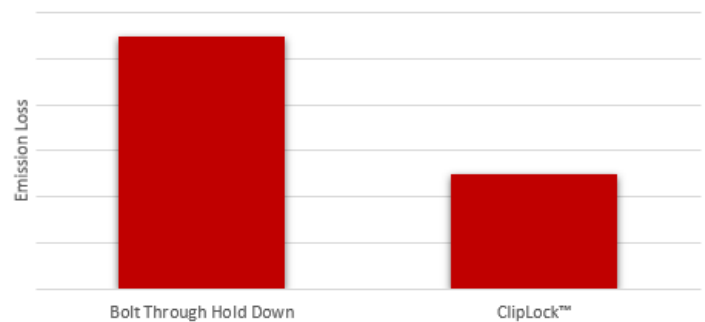
Install bracket clip and lock fabric in place. No fasteners or tools are required.



Installer simply folds seal fabric into the bracket and secures it in place with a proprietary full length spring clip.



Bolt-Through Hold Down vs. ClipLock™ Emission Loss Comparison



MEMBERSHIPS

