



MESA INDUSTRIES, INC.

4141 Airport Rd.
Cincinnati, OH 45226
Phone: (513) 321-4511 Fax: (513) 321-2189

MD-1496 FOAM DELIVERY SYSTEM DATA SHEET

Proposal No.: _____

Date: _____

Customer Data

Customer: _____

User: _____

Tank Location: _____

Tank No.: _____

Product Data

Product Stored: _____

NFPA Product Class: _____

Flash Point: _____ (°F)

Boiling Point: _____ (°F)

Foam-to-Solution Ratio (4:1): _____

Foam Additive: _____

Tank Data

Tank Diameter: _____ (ft) Nominal Rim Space: _____ (in)

Tank Height: _____ (ft) Foam Dam Height: _____ (in)

Tank Seal: Type _____

Type (1) Mechanical Shoe Seal, Fixed, Below-the-Seal Discharge

Type (2) Tube Seal, Fixed, Below-the-Seal Discharge

Type (3) Top-of-Seal Discharge with 12" Foam Dam

Type (4) Top-of-Seal Discharge with 24" Foam Dam

Foam Maker-to-Shell:

Pipe Size: _____ (in) Pipe Length: _____ (ft)

Max. Available Pressure to Foam Maker: _____ (psi)

MESA INDUSTRIES, INC.

MD-1496

FOAM DELIVERY SYSTEM DATA SHEET

SHOW THE FOLLOWING ON THE PLAN VIEW:
(IN THE AREA OF THE FOAM SYSTEM)

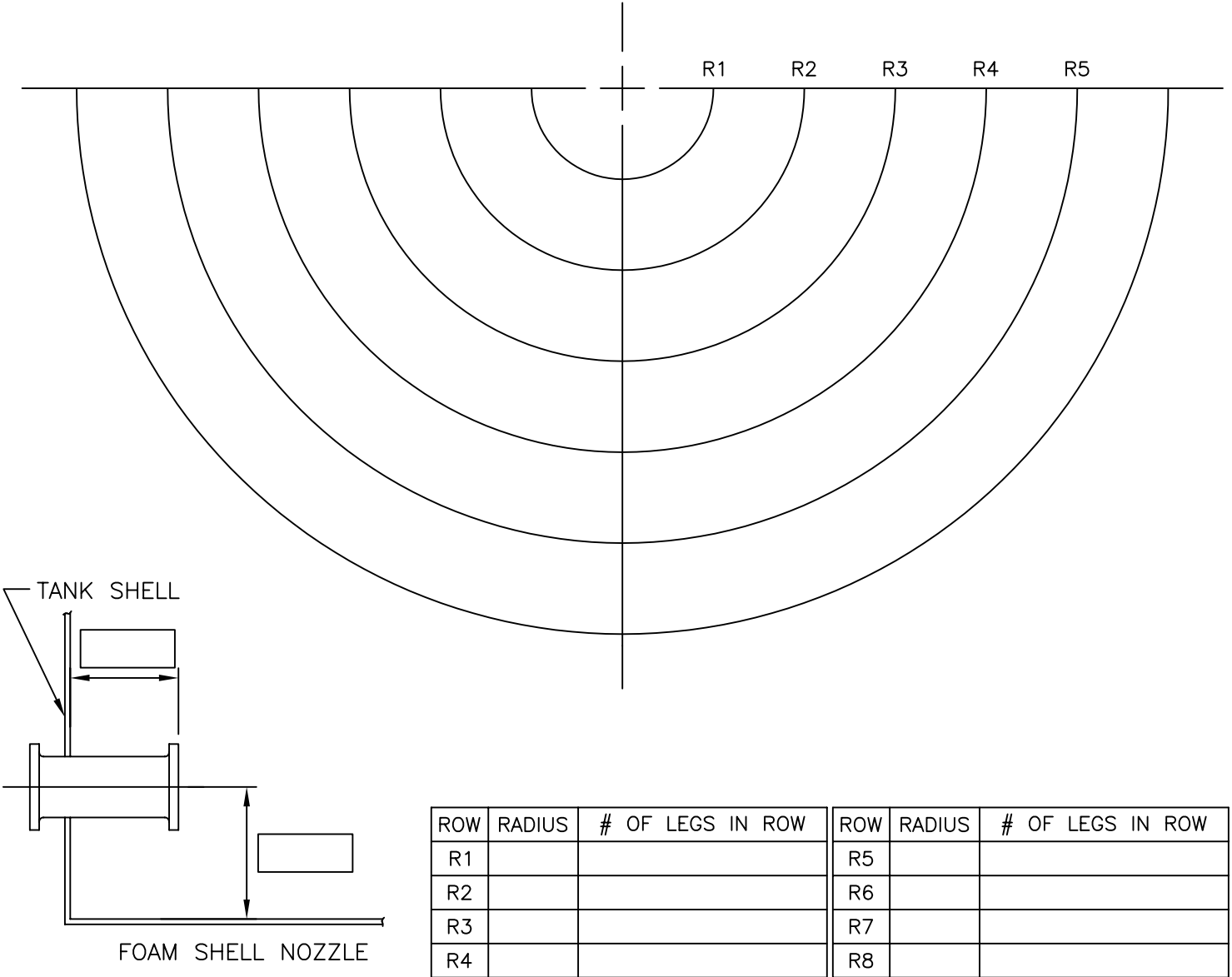
1. LOCATION OF LEGS, FLOOR SUMPS, VENTS & VALVES

2. LOCATION OF INTERNAL PIPING AND ITS DIAMETER.
(SWING LINES, FILL LINES, ETC.)

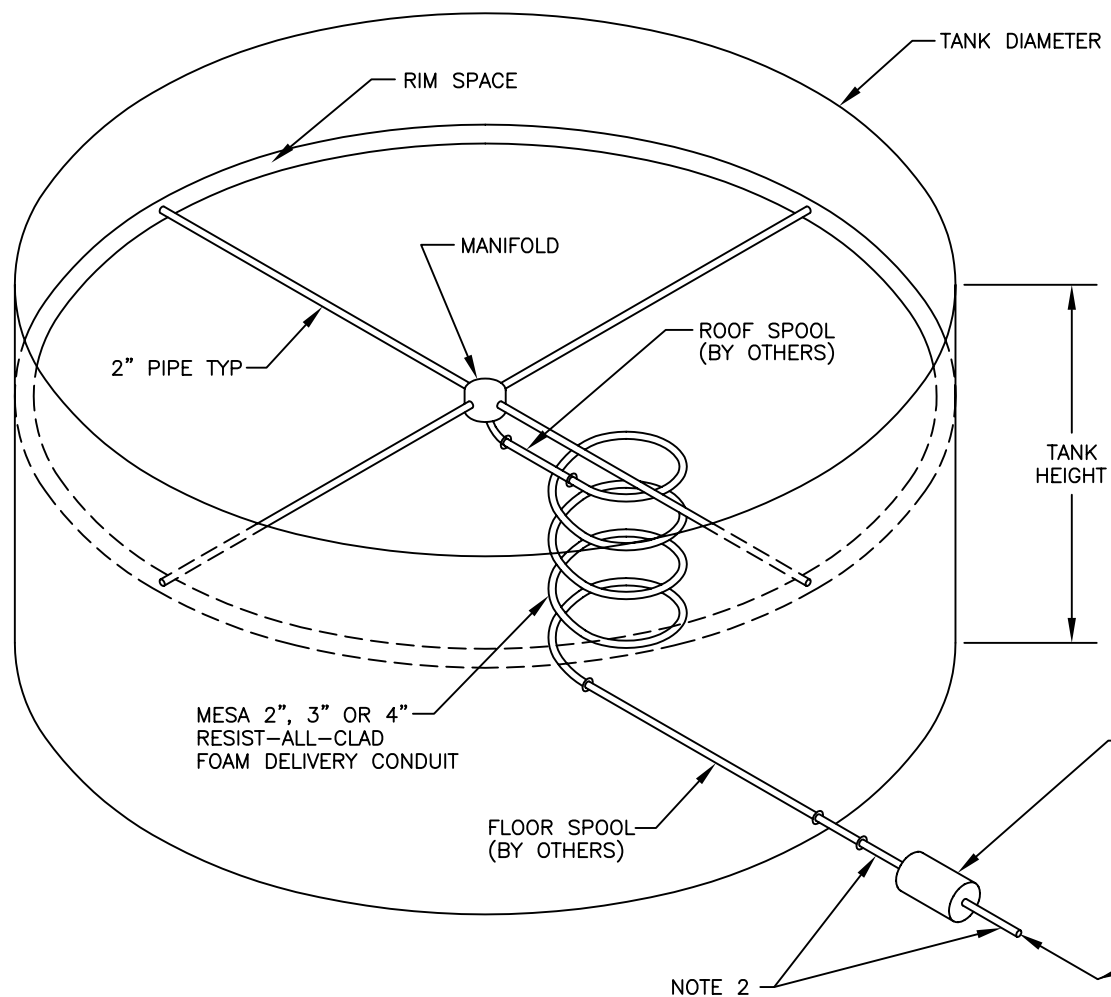
3. LOCATION AND LENGTH OF EXISTING PIPE EXTENSIONS
(ROOF & FLOOR). IF NO EXTENSIONS, SO NOTE.

TANK #: _____

LOW LEG HEIGHT: _____

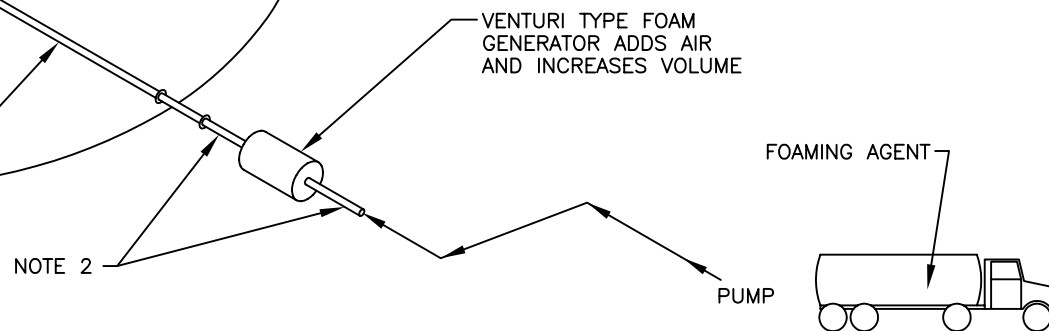


REFERENCE: MD-1550 (FOAM DELIVERY SYSTEM GENERAL LAYOUT)



REVISIONS			
NO.	DESCRIPTION	DATE	APPROVED

NOTES:
 1. REFERENCE DATA SHEET MD-1496.
 2. IF CALCULATIONS ARE REQUIRED, PIPING DETAILS (LENGTH, DIAMETER, ELBOWS & VALVES), BETWEEN THE PUMP AND TANK SHELL, MUST BE SUPPLIED.



<div>TOLERANCES NOT SHOWN</div> <div>FRACTIONAL DIM'S UP TO 48" +/- 1/16"</div> <div>FRACTIONAL DIM'S OVER 48" +/- 1/8"</div> <div>DECIMAL DIM'S:</div> <div>.00 +/- .030"</div> <div>.000 +/- .015"</div> <div>.000 +/- .005"</div> <div>ANGLES +/- 1/2 DEGREE</div>	<div>THIS DRAWING AND THE INFORMATION THEREON ARE THE PROPERTY OF MESA INDUSTRIES, INC. AND ARE NOT TO BE USED IN ANY WAY DETRIMENTAL TO THE INTEREST OF MESA INDUSTRIES INC.</div> <div>MESA INDUSTRIES, INC.</div> <div>4141 AIRPORT RD. CINCINNATI, OHIO 45226 PHONE (513) 321-2950</div> <div>1726 S. MAGNOLIA AVE. MONROVIA, CA 91016 PHONE (626) 359-9361</div>	ITEM		PART NO.		DESCRIPTION		QTY			
		DRAWN	CLR	DATE	6-23-08	APPROVED	CLR	SHEET	1 OF 1	SCALE	NONE
		PART NAME							PART NUMBER	REVISION	
		FOAM DELIVERY SYSTEM							MD-1550	0	

